



# Remote ImageJ - Running macros on a distant machine



Volker Bäcker

Montpellier RIO Imaging

[www.mri.cnrs.fr](http://www.mri.cnrs.fr)

IFR122

INSERM

29.10.2010



# Remote ImageJ - Outline



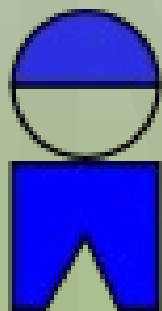
- the context at the MRI imaging facility
- design decisions
- components
  - SIJAME – messaging middleware
  - Modal-Dialog-Killer
  - Macro\_IO\_Settings
  - Remote-Filesystem-View
  - Remote Macro Runner
- conclusions and future work



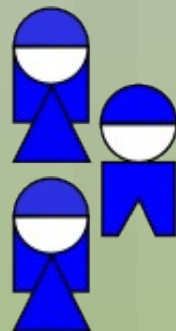
# Motivation – MRI, the facility 2009



531



150



59

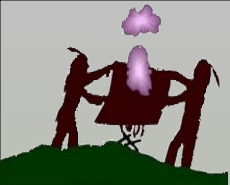


11

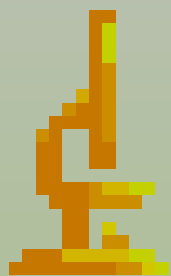


40000





# Motivation – MRI Image Analysis



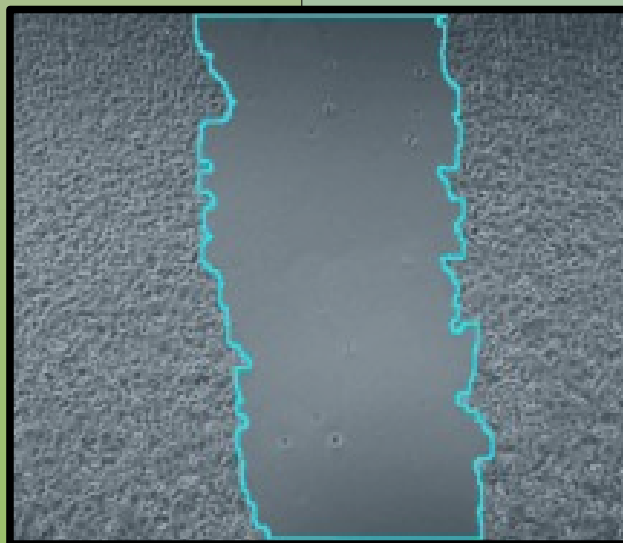
13



```
// wound healing macro
```

```
run("Find Edges", "stack");  
run("Invert", "stack");  
setAutoThreshold("Pdark");  
run("Convert to Mask");  
resetThreshold();  
run("Invert", "stack");  
run("Dilate", "stack");
```



- development of image analysis and automation solutions on demand





# Motivation – The Problem

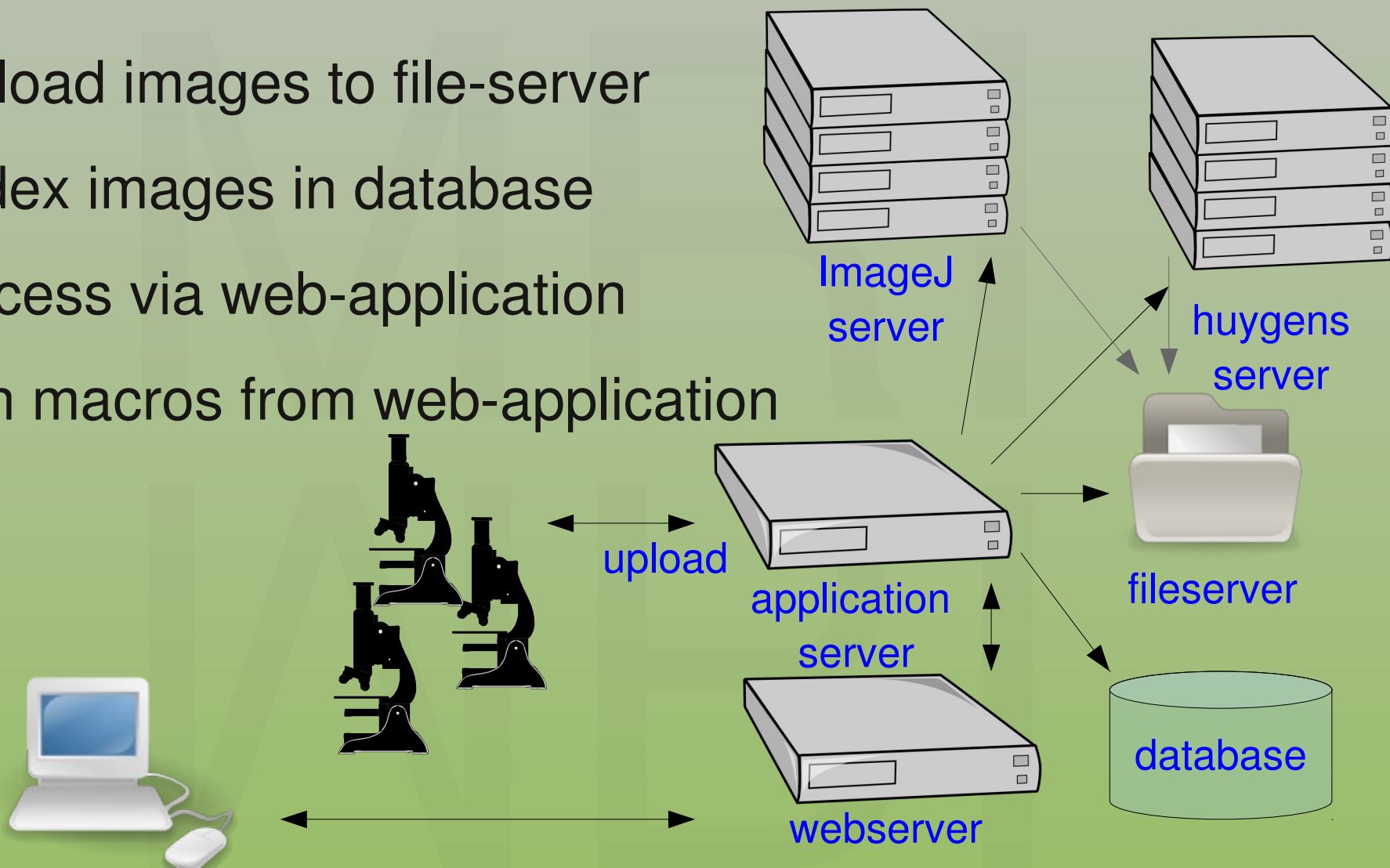


- ✓ automated image analysis 
- ✗ macro-batch-processing blocks machines
- ✗ installation / maintenance on many machines
- ✗ transfer of images between machines 



# Motivation – The Solution: Cicero

- upload images to file-server
- index images in database
- access via web-application
- run macros from web-application





# Motivation – The Solution: Cicero

Cicero File Manager

http://localh...ithImageJ.jsf

### Cicero File Manager

edit download thumbnail size

List Thumbnails Groups

Folder : wound healing in

folders

- BAECKER
  - wound healing results
  - wound healing control
  - wound healing in
  - incoming
    - orion
      - 20.10.2010 16:18

rename  
create folder  
cut  
copy  
remove

Upload Progress

Select...	0/0 (files)	Size:	rem...
<input type="checkbox"/>	t_0030035.tif	0 MB of -0 MB (-0%) - 0 sec remaining	
	orion:/media/DONNEES/mri/in/xound-healing/seq/t_0030035.tif		
	ok - created - 20.10.2010 16:18 - 0 sec - 0.0 KB/s		
<input type="checkbox"/>	t_0030010.tif	0 MB of -0 MB (-0%) - 0 sec remaining	
	orion:/media/DONNEES/mri/in/xound-healing/seq/t_0030010.tif		
	ok - created - 20.10.2010 16:18 - 0 sec - 0.0 KB/s		
<input type="checkbox"/>	t_0030036.tif	0 MB of -0 MB (-0%) - 0 sec remaining	
	orion:/media/DONNEES/mri/in/xound-healing/seq/t_0030036.tif		
	ok - created - 20.10.2010 16:18 - 0 sec - 0.0 KB/s		
<input type="checkbox"/>	t_0030011.tif		

uploading: 0:files stop

Logout

Done

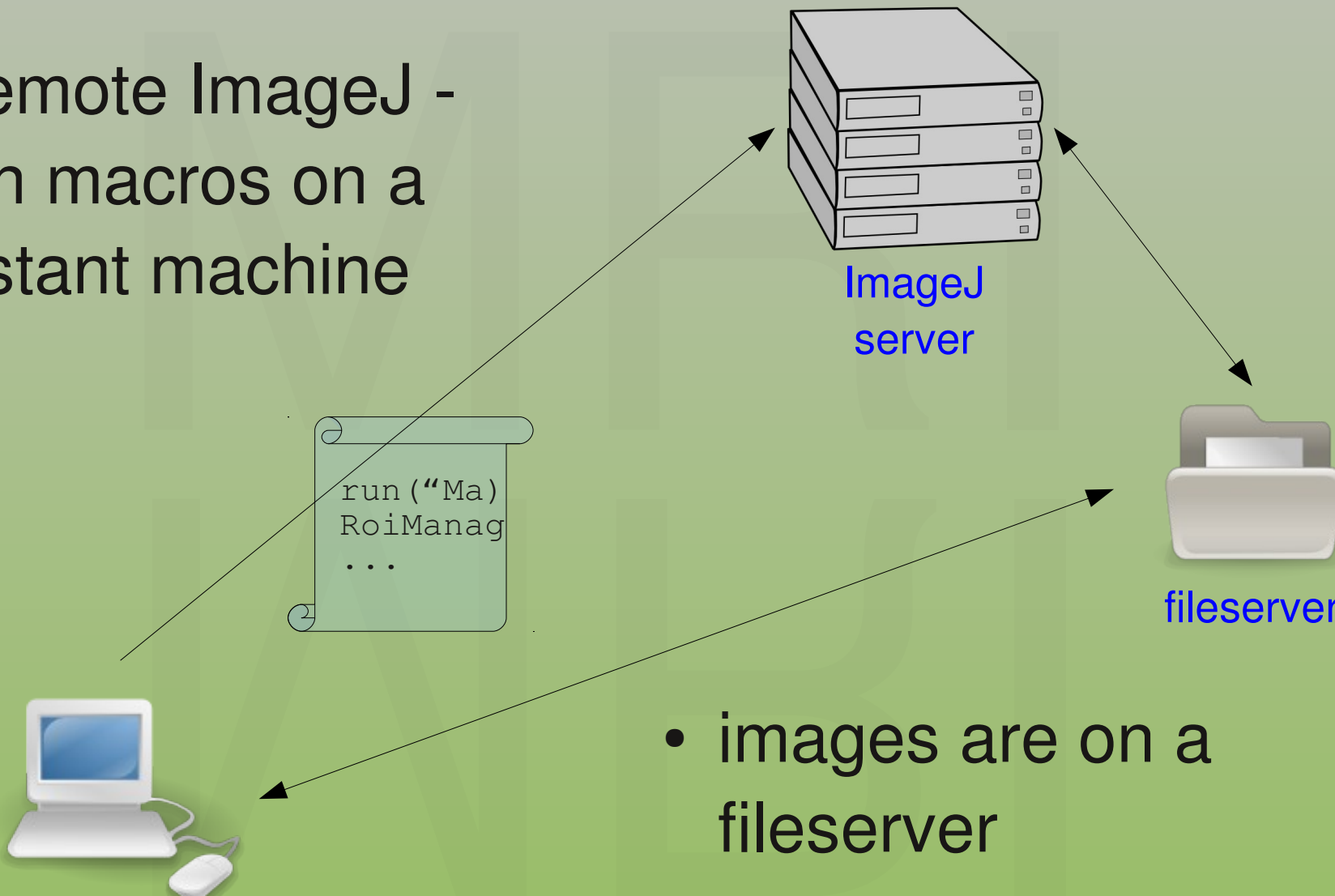
t\_003.tif 14528 kB

t\_004.tif 126931 kB



# Remote ImageJ – Analysis

- Remote ImageJ - run macros on a distant machine



- images are on a fileserver





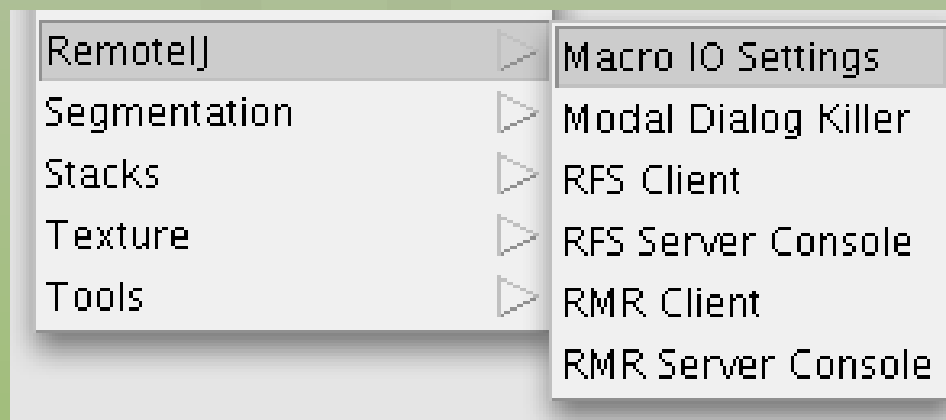
# Remote ImageJ – Analysis & Design

- use ImageJ and plugins only
- send macros from client to server and answers back
  - asynchronous communication
- access paths as seen by the server
  - synchronous communication
- server can be headful
  - avoid modal dialogs
- modularity
  - independent components that play together



# Remote ImageJ – Components

- Existing
  - SIJAME – Simple JAva MESSAge EXchange
  - Modal-Dialog-Killer
  - Macro\_IO\_Settings
  - Remote-Filesystem-View
  - Remote Macro Runner
- Future
  - Queue-Manager





# Remote ImageJ – SIJAME



- SIJAME
  - socket based communication
  - messages are transferred binary
  - message can carry serializable data
  - server can put message in a queue
  - synchronous or asynchronous communication
  - symmetric:
    - client is a server
    - answer-queue

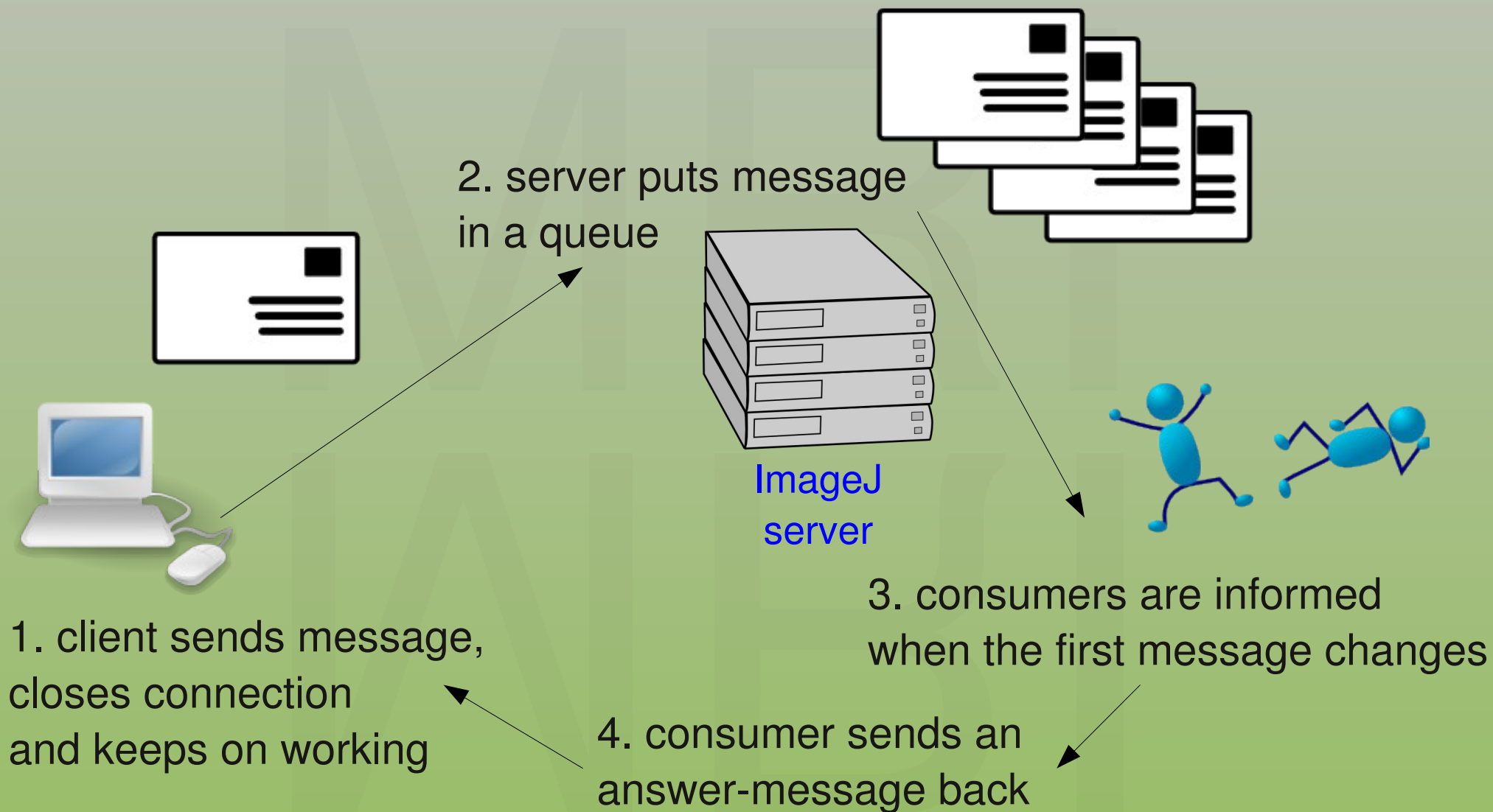
```
Log Viewer
22-Oct-2010 16:48:12
fr.cnrs.mri.sijame.connection.SIJAMEServer run
INFO: Listening on port 4000...

22-Oct-2010 16:48:49
fr.cnrs.mri.sijame.connection.SIJAMEServer run
INFO: Listening on port 4001...

22-Oct-2010 16:48:49
fr.cnrs.mri.sijame.connection.SIJAMEServer run
INFO: Got connection from
Socket[addr=/127.0.0.1,port=35640,localport=4000]
```

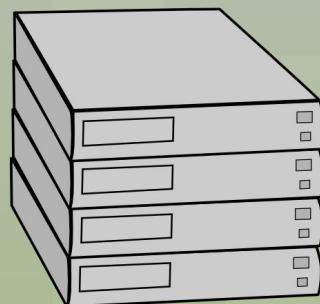


# SIJAME asynchronous





# SIJAME synchronous



ImageJ  
server



2. consumers are informed that a message arrived

1. client sends message and waits for answer,  
4. sends close to finish conversation



3. consumer sends answer on the same channel



- communication middleware SIJAME
- problem of modal dialogs on the server



# Modal Dialog Killer



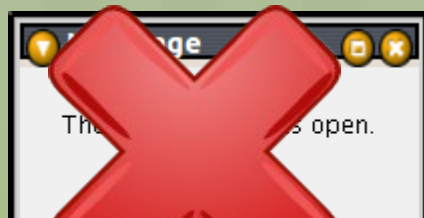
GenericDialog



WaitForUserDialog



GenericDialog



**Modal Dialog Killer**

stop

```
Fri Oct 22 17:59:00 CEST 2010 - ij.gui.GenericDialog:enter a number
Fri Oct 22 17:59:09 CEST 2010 - ij.gui.WaitForUserDialog:Action Required
Fri Oct 22 17:59:19 CEST 2010 - javax.swing.JDialog:Select the input folder!
Fri Oct 22 17:59:25 CEST 2010 - ij.gui.MessageDialog:No Image
Fri Oct 22 17:59:30 CEST 2010 - ij.gui.GenericDialog:Macro Error
```



- communication middleware SIJAME
- problem of modal dialogs on the server
- how to specify input files and folders for macro



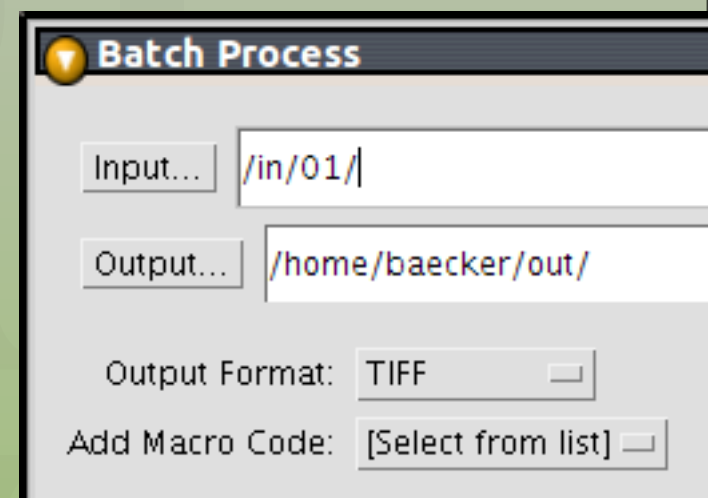


# specify input – standard approach



```
inDir = getDirectory("Select the input folder!");  
files = getFileList(inDir);
```

- folder can contain other images
  - need to filter
- code to load dependent files
  - naming scheme can change
- edit lists of files instead of selecting folders

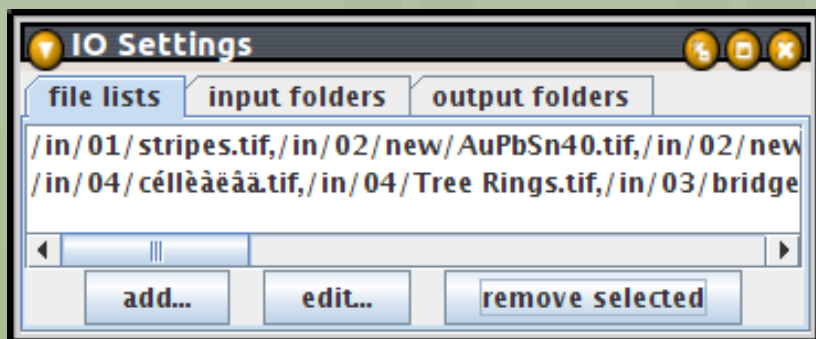


YGZG7-gfp001  
YGZG7-gfp002

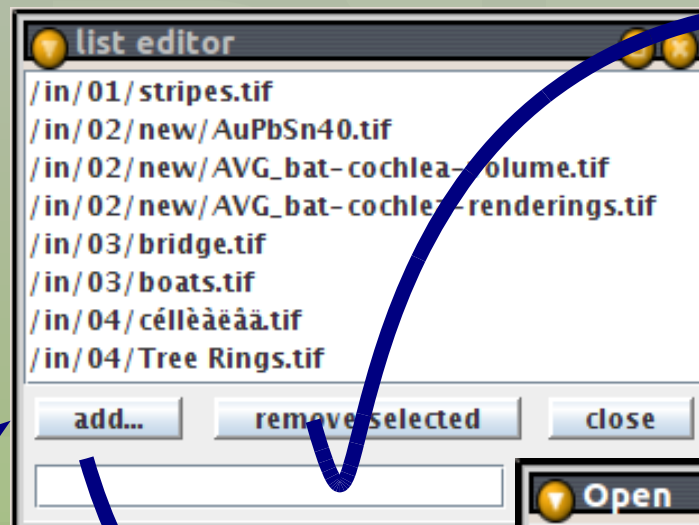
YGZG7-dapi001  
YGZG7-dapi002



# Macro\_IO\_Settings

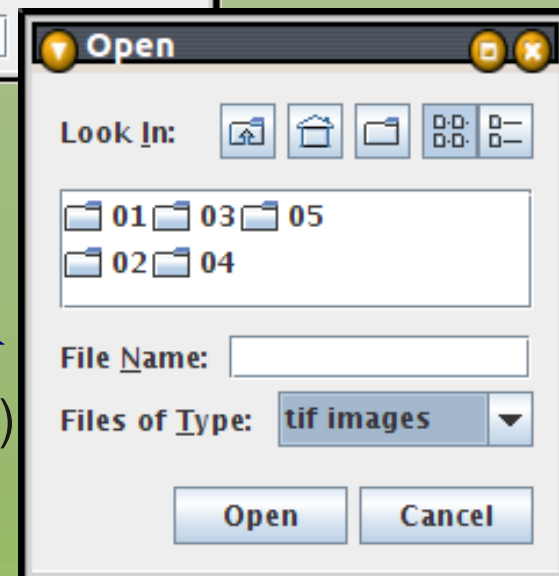


add a list  
• one per channel



filter  
unwanted

add files  
• select multiple files  
• select a folder (recursively)  
• tif, all images, all files





# Macro\_IO\_Settings



```
call("fr.cnrs.mri.macro.io.IOSettings.resetFileLists");
call("fr.cnrs.mri.macro.io.IOSettings.show");

waitForUser("Please select the input files and press ok");

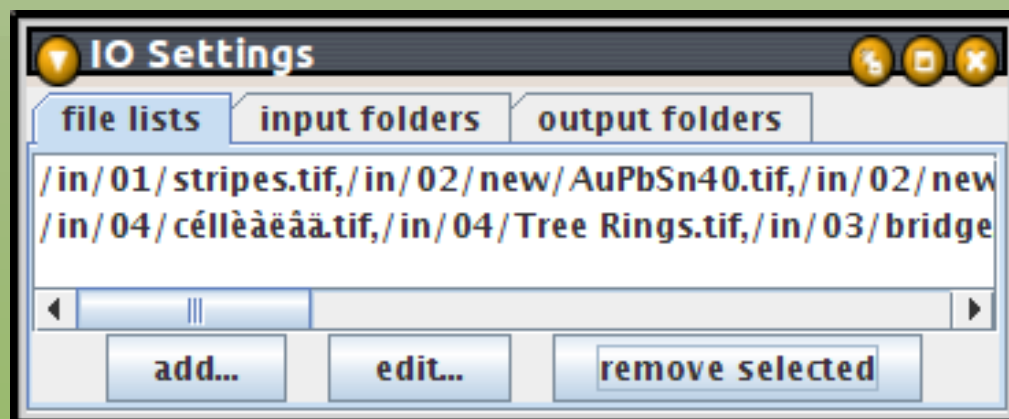
list = call("fr.cnrs.mri.macro.io.IOSettings.getFileList");
if (list=="none") {
    IJ.log("No files selected! Macro stopped."); return;
}

files = split(list, ",");

for (i=0; i<files.length; i++) {
    file = files[i];
    ...
}
```

lists of lists as strings

- lists separated by ;
- elements separated by ,

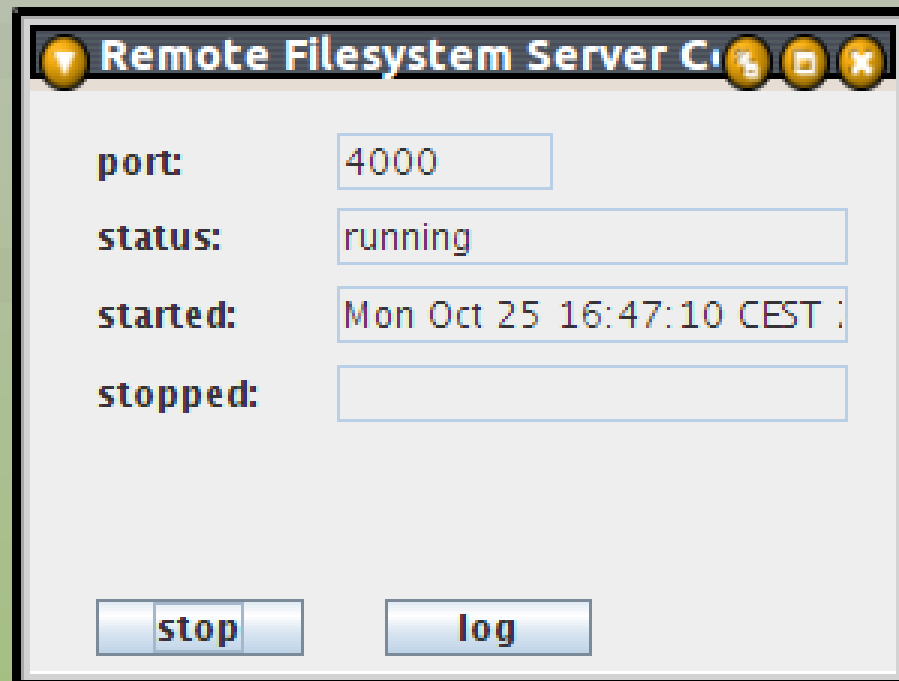
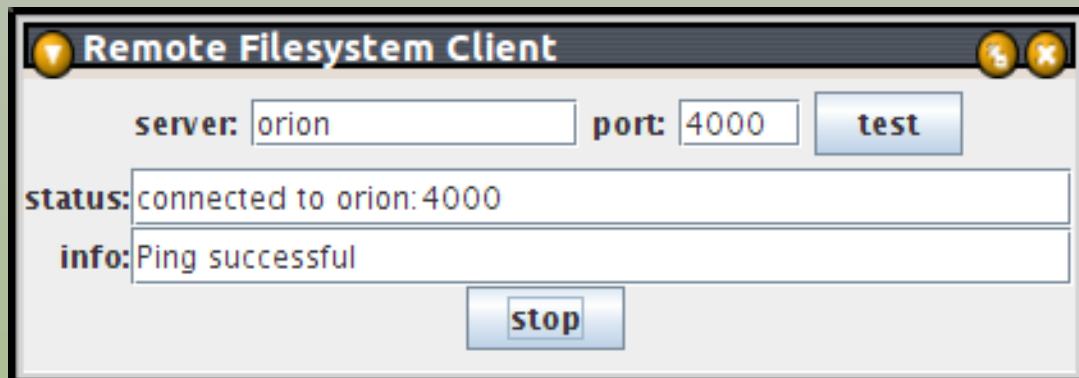




- communication middleware SIJAME
- problem of modal dialogs on the server
- how to specify input files and folders for macro
- distant input files and folders



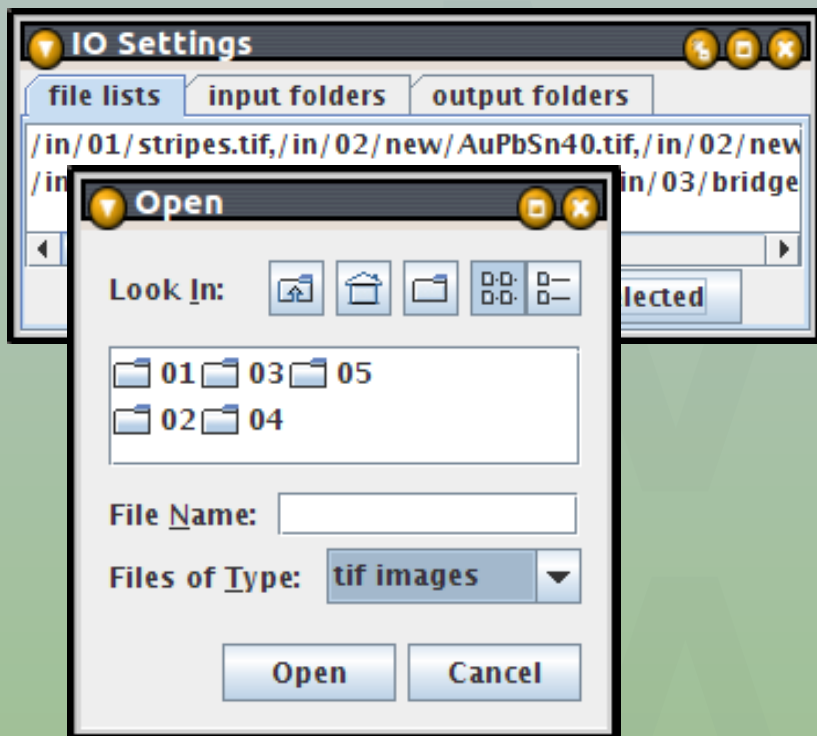
# Remote-Filesystem-View



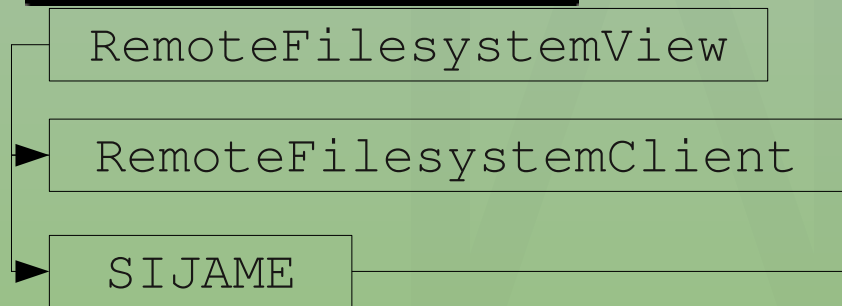
- when connected io-settings will show remote paths in FileDialog



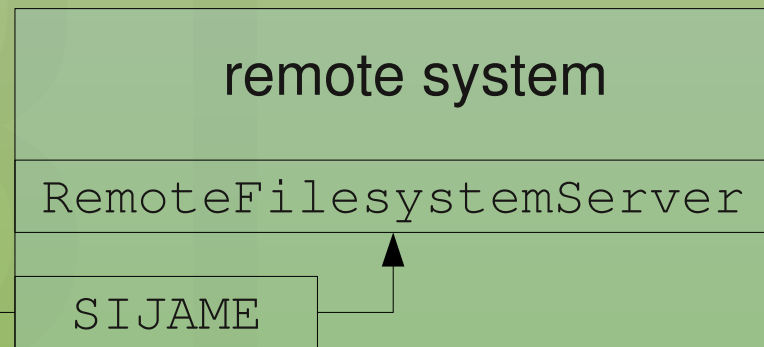
# Remote-Filesystem-View



- configure visible root-folder
- use folders:
  - <login-name>
  - common



synchronous

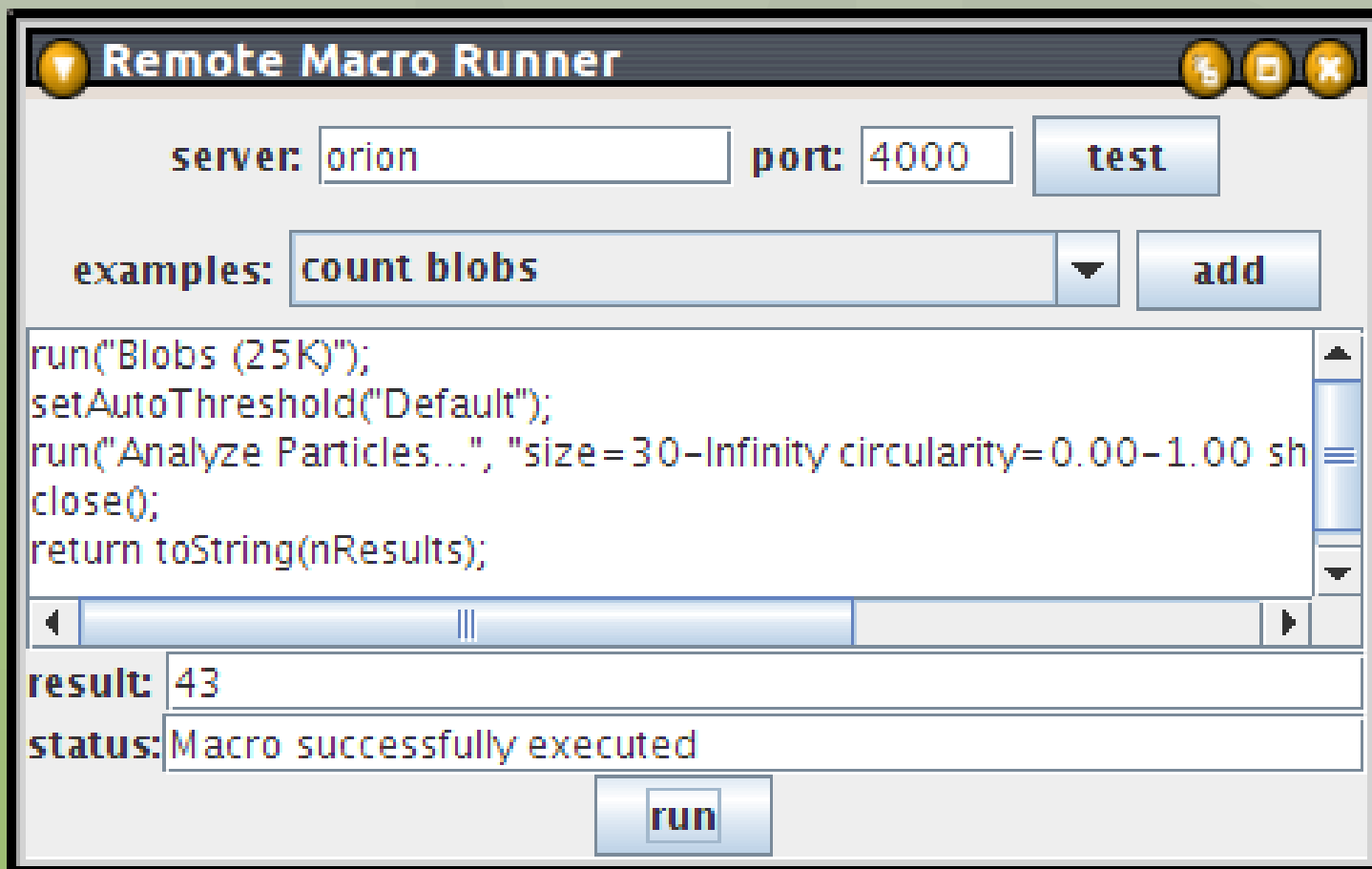




- communication middleware SIJAME
- problem of modal dialogs on the server
- how to specify input files and folders for macro
- distant input files and folders
- run macros on a remote machine



# Remote-Macro-Runner Client



- send macro + io-settings
- io-settings can use remote-filesystem-view
- asynchronous communication
- macro must have return value
- runs SIJAME server to get answers back





# Remote-Macro-Runner Server

- queue incoming messages
- messages are handled in the order of arrival
- use modal-dialog-killer
- set io-settings from message and execute macro
- send answer message with return value back to client

Remote Macro Runner Serv

port: 4000

status: running

started: Mon Oct 25 17:37:03 CEST

stopped:

macros executed: 28

macros waiting: 0

stop log

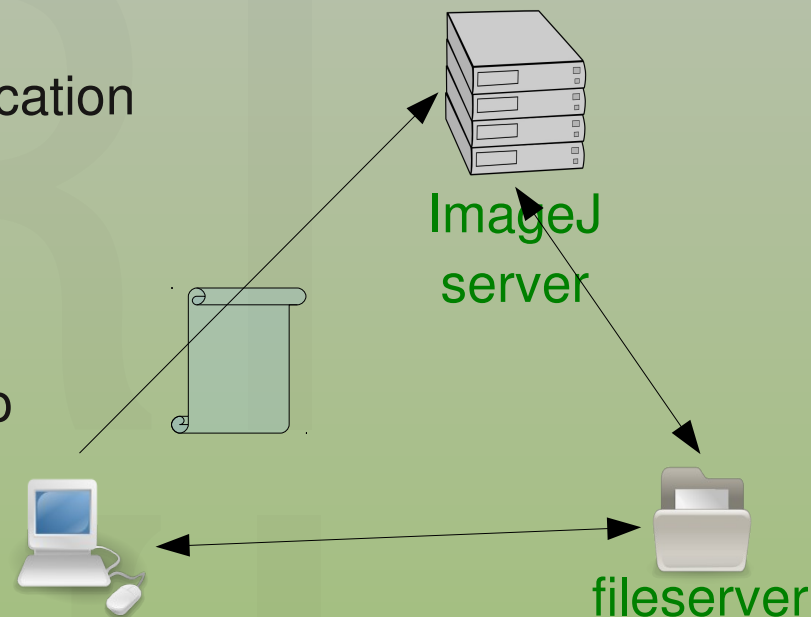
- multiple clients can use the same server in the same time



# Conclusions

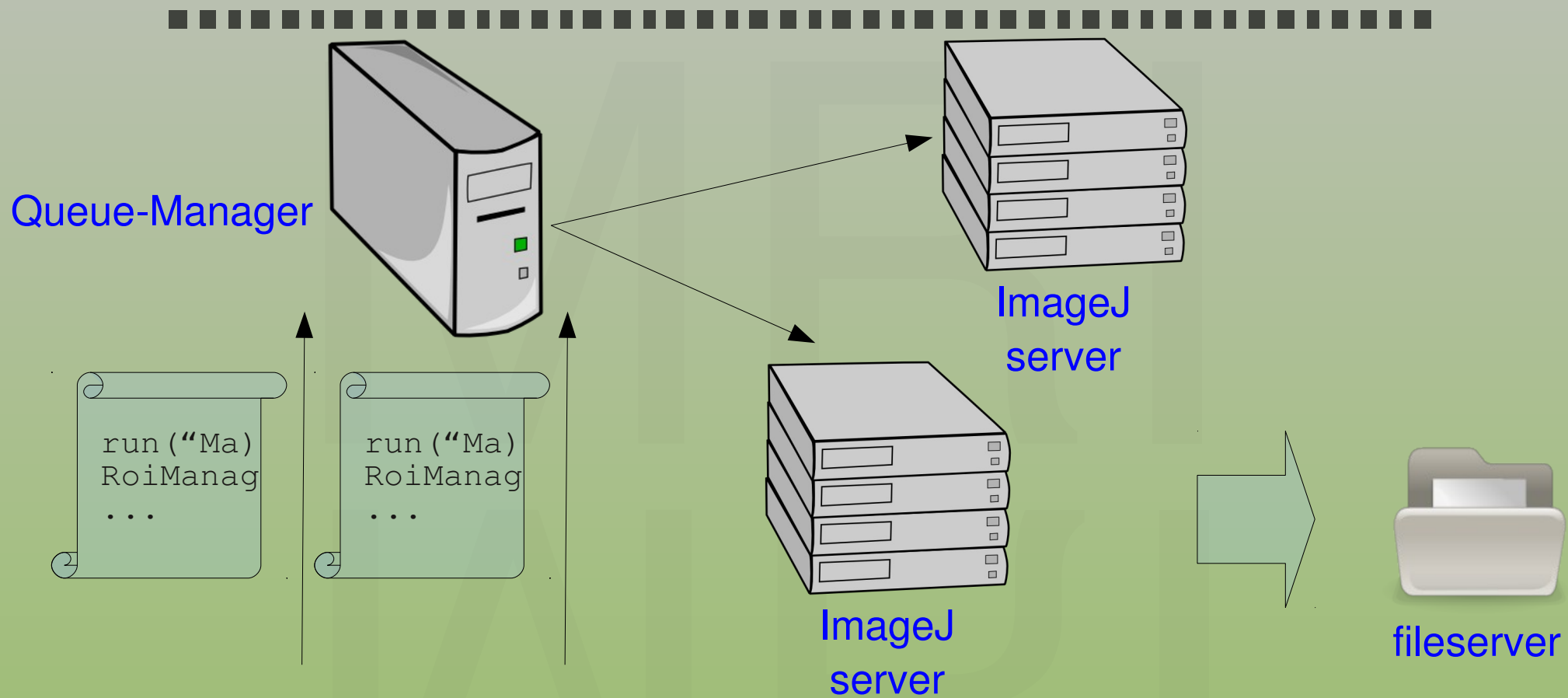


- communication middleware [SIJAME](#)
  - synchronous and asynchronous communication
- problem of modal dialogs on the server
  - [Modal-Dialog-Killer](#)
- how to specify input files and folders for macro
  - [Macro\\_IO\\_Settings](#)
- distant input files and folders
  - [Macro\\_IO\\_Settings + RemoteFilesystemView](#)
- run macros on a remote machine
  - [RemoteMacroRunner](#)





# Future Work



- Queue-Manager
- persist queue
  - distribute jobs to multiple ImageJ-servers

REMOTE IMAGEJ - [volker.baecker@mri.cnrs.fr](mailto:volker.baecker@mri.cnrs.fr)



# Future Work



- support scripts
  - Javascript and other scripting languages from FIJI
  - Visual Scripting - MRI Cell Image Analyzer
  - ImageFlow - Dr. Kai Uwe Barthel
- handle other parameters in the same way as paths
  - gui input on client – send to server
- secure internet communication
  - authentication, secure sockets, certificates
- integrate into CICERO-image-database



# Thank you



for your attention!

Thanks to Wayne Rasband  
and the ImageJ-community

Thanks to the MRI-team:



Pierre Travo



Olivier Miquel



Corine  
Tran-Aupiais

Sylvain De Rossi, Virginie Georget, Alexandre Granier, Stephanie Vaudescal, ...